

COMMERCIAL BUILDING EXPANSION



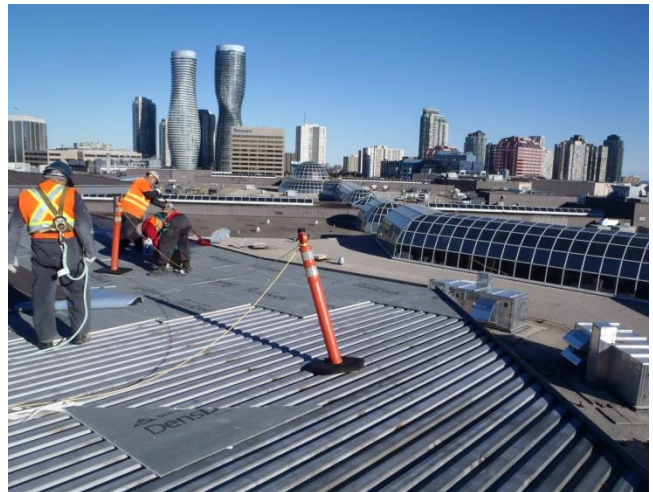
Installation of curtain wall framing at the main entrance of new expansion



Construction of new entrance feature



Cladding of new entrance feature



Construction of new roof of new expansion

Scope:

Quality Observations and Building Envelope Engineering

Services Provided:

Provide periodic on site review and design review of waterproofing curtain wall, EIFS, and masonry cladding elements. Construction review of envelope work in progress to comment on workmanship and materials used by the contractor are in accordance with the specification requirements and applicable standards.

Construction Value:

\$40,000,000.00